



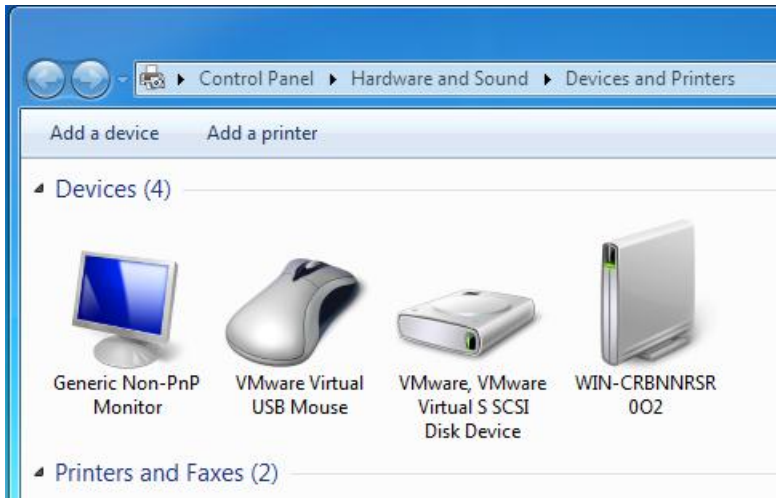
Subject: Connecting to printer in OB222C Lab

Technical Reference #: TRD064

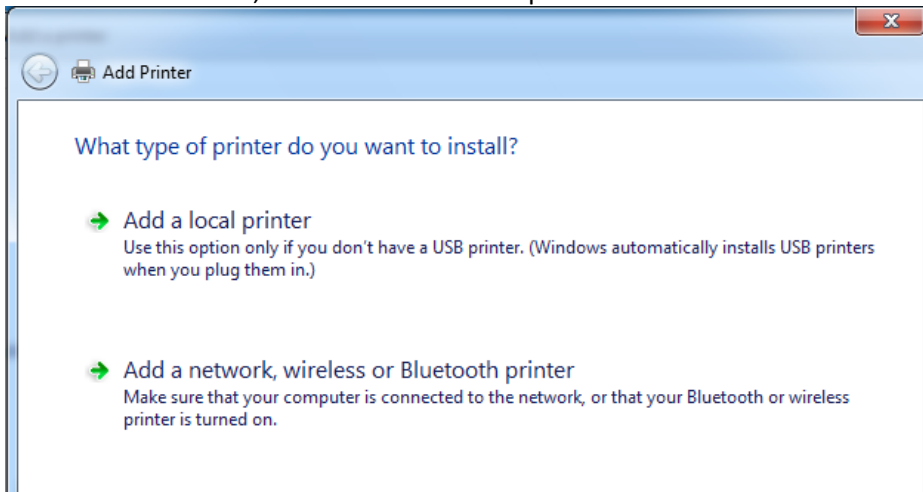
Intended Audience: ACPHS Students

Date: 09/22/2011 (UPDATE)

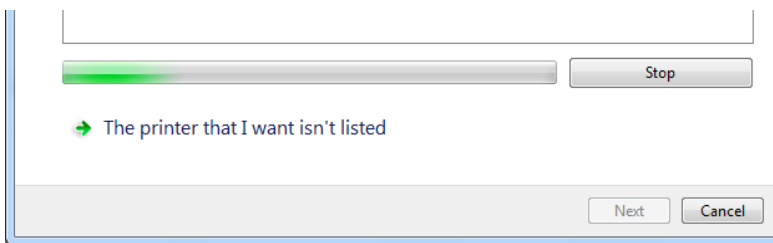
1. Go to Start → Devices and Printers
2. Click "Add Printer".



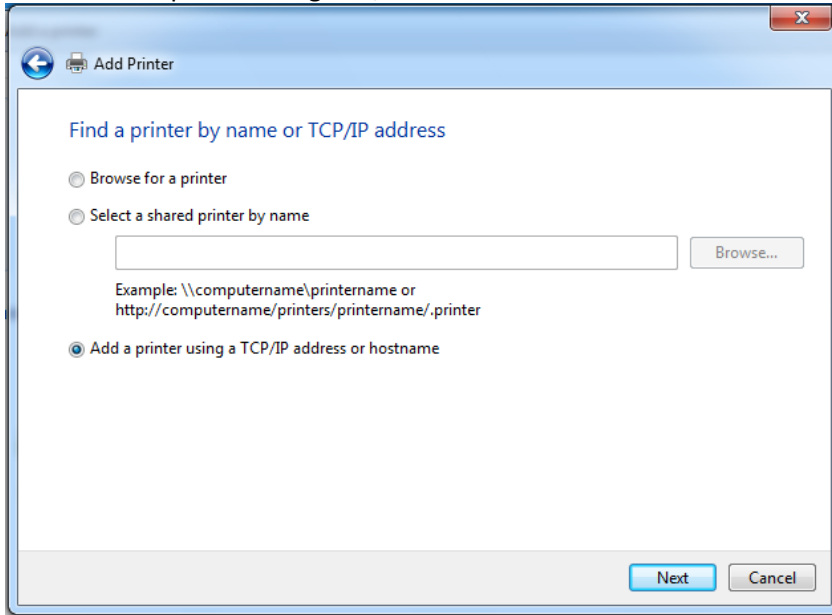
3. Click "Add a network, wireless or Bluetooth printer".



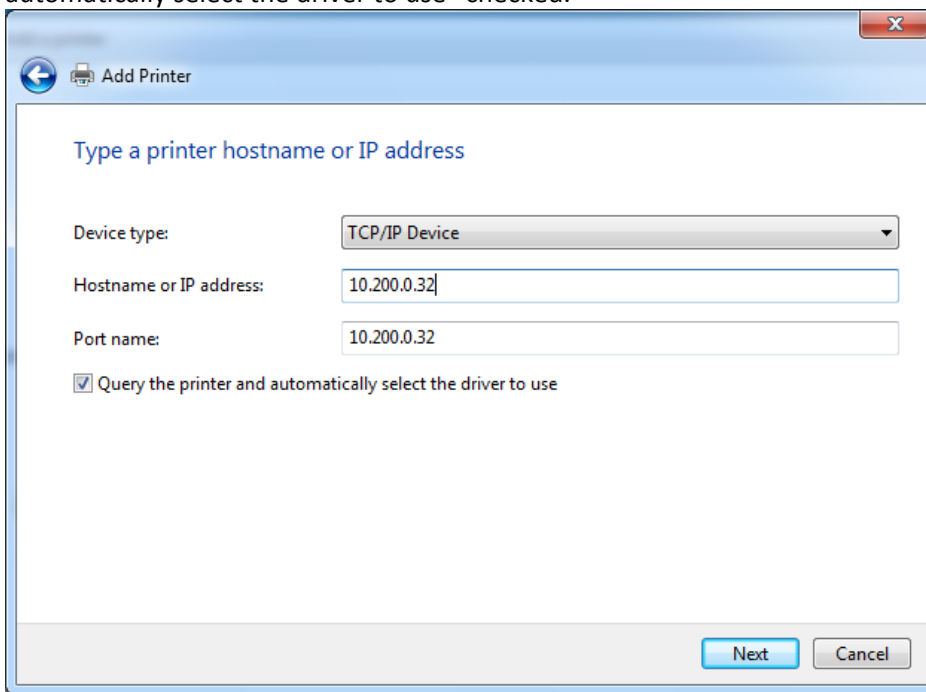
4. Select "The printer that I want isn't listed".



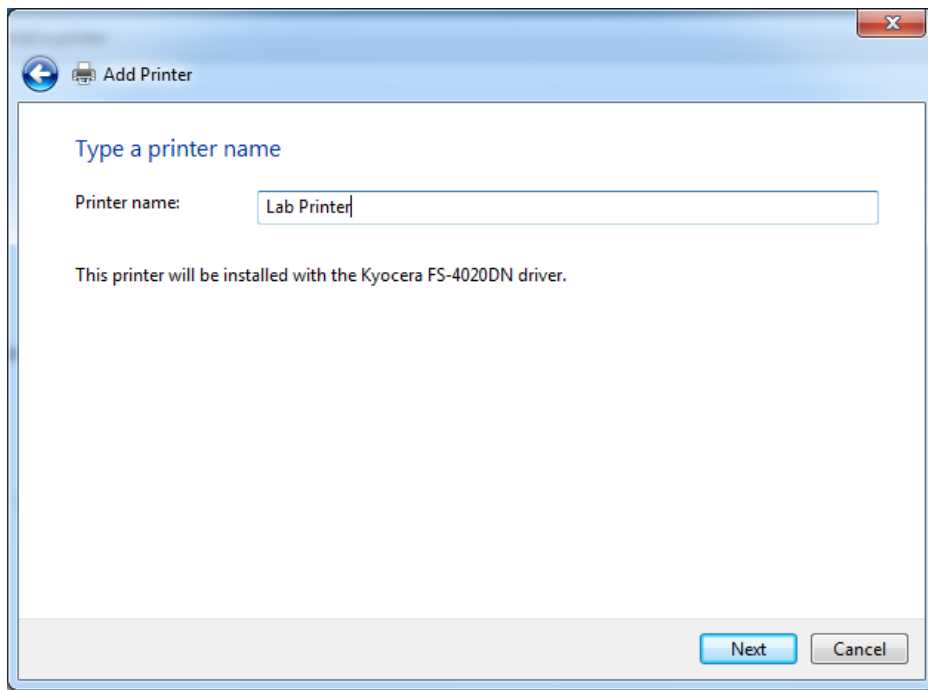
5. Select “Add a printer using TCP/IP address or hostname” and click next.



6. In the “Device type” drop-down list select “TCP/IP Device”, enter **10.200.0.32** in the “Hostname or IP address” box and then click next. Leave the check box next to “Query the printer and automatically select the driver to use” checked.



7. Change to name to “Lab Printer” or whatever you want to call it and select “Next”.



8. Select “Print a test page” if you want to test it or click “Finish”.

